

BSF Programme Ellis Guilford School

Presentation to Area 2 Committee

City of Nottingham Building Schools for the Future: Ellis Guilford School
Stage 0 Report | 04th December 2009



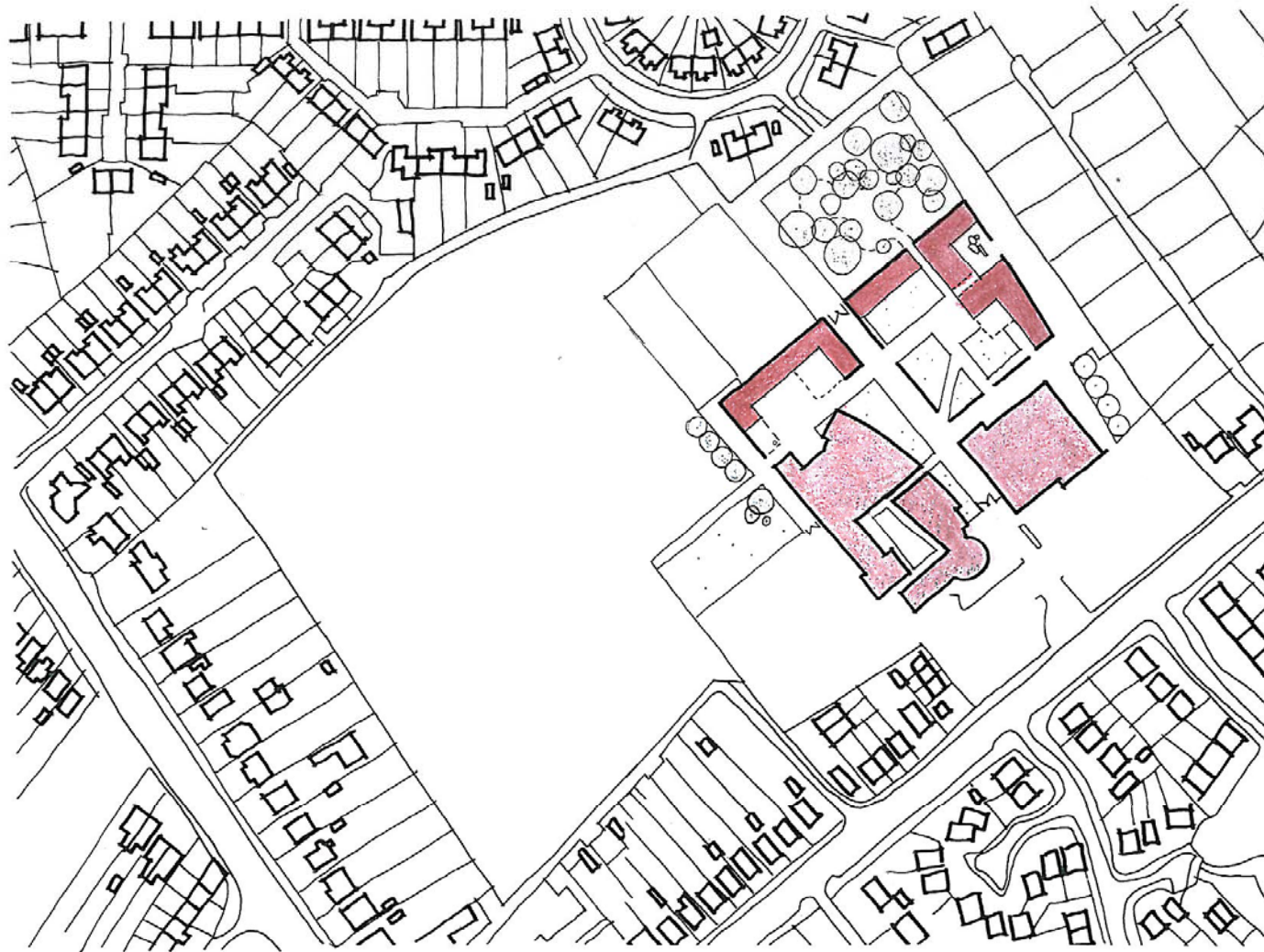
Project Stage:

Feasibility study stage 0 - zero

- **consultation with the School community**
- **analysis of the existing site**
- **site constraints**
- **scoping of school's 'education vision'**
- **BSF budget restrictions**



Existing Site plan



Walled Garden

This option differs in that it proposes to replace the Guilford building with an orchard / organic landscaped space and concentrates the new build such as to form a 'walled' enclosure. The 'wall' is expressed both as the extremities of buildings as well as simply a wall. Views and routes are created through openings in the wall. The walled garden proposes a more enclosed and protected external space.



intimacy

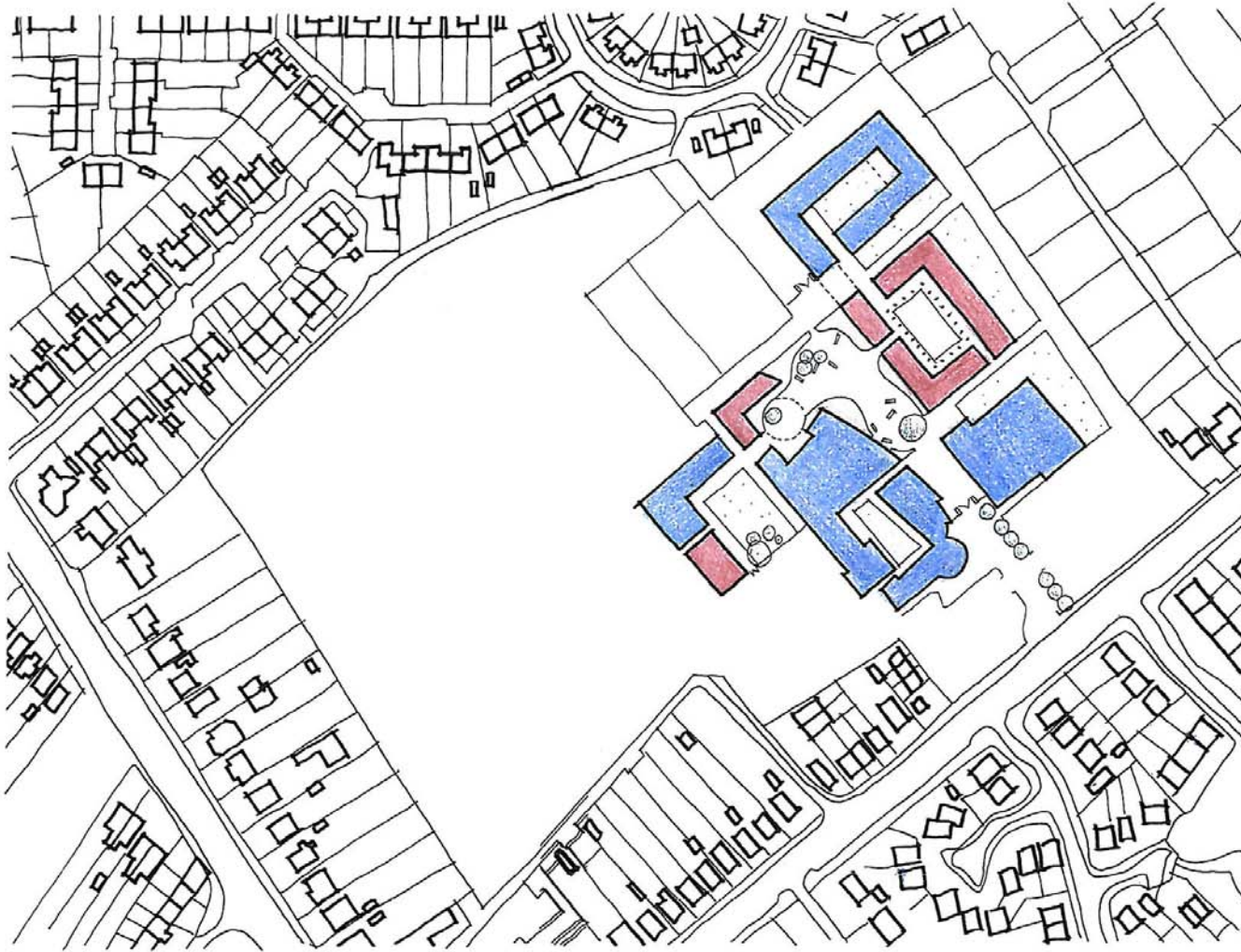


focus



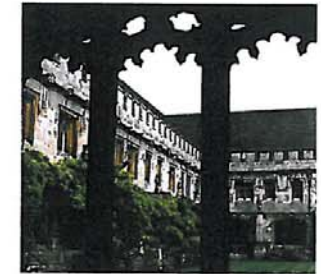
inhabited walls

Masterplan option – 'walled garden'



Cloistered Courtyard

This option proposes more substantial new-build between the existing Sports Hall and Guilford building in the form of a 4-sided cloistered building around a central courtyard. The new courtyard has a proposed external link to the existing Guilford courtyard. The external space between the new build and existing 3/4 storey block is proposed as informal recreation space which is linked to existing gardens via a series of landscaped spaces of varying character.



covered walkways

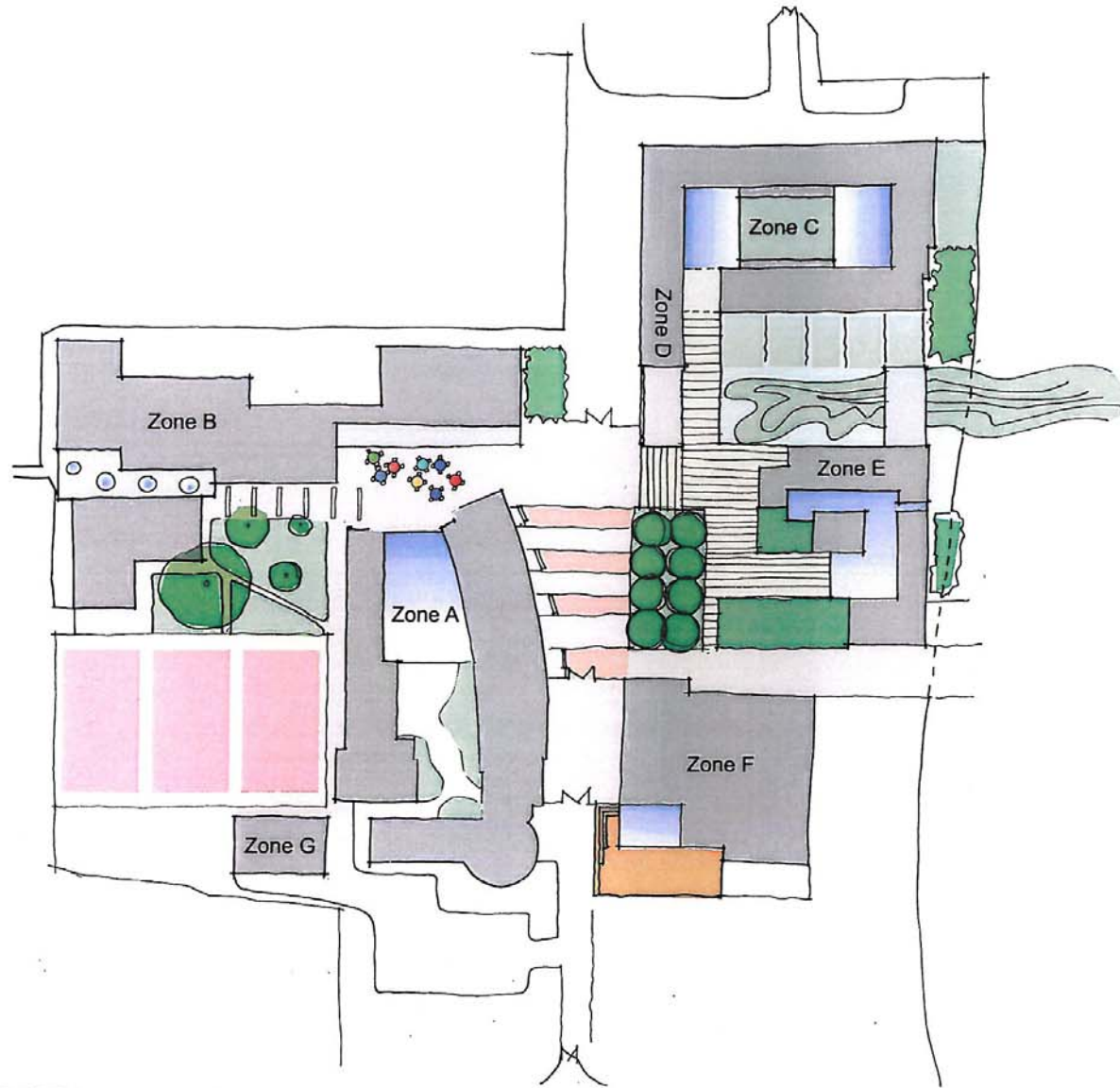


strong rhythm



framing of central space

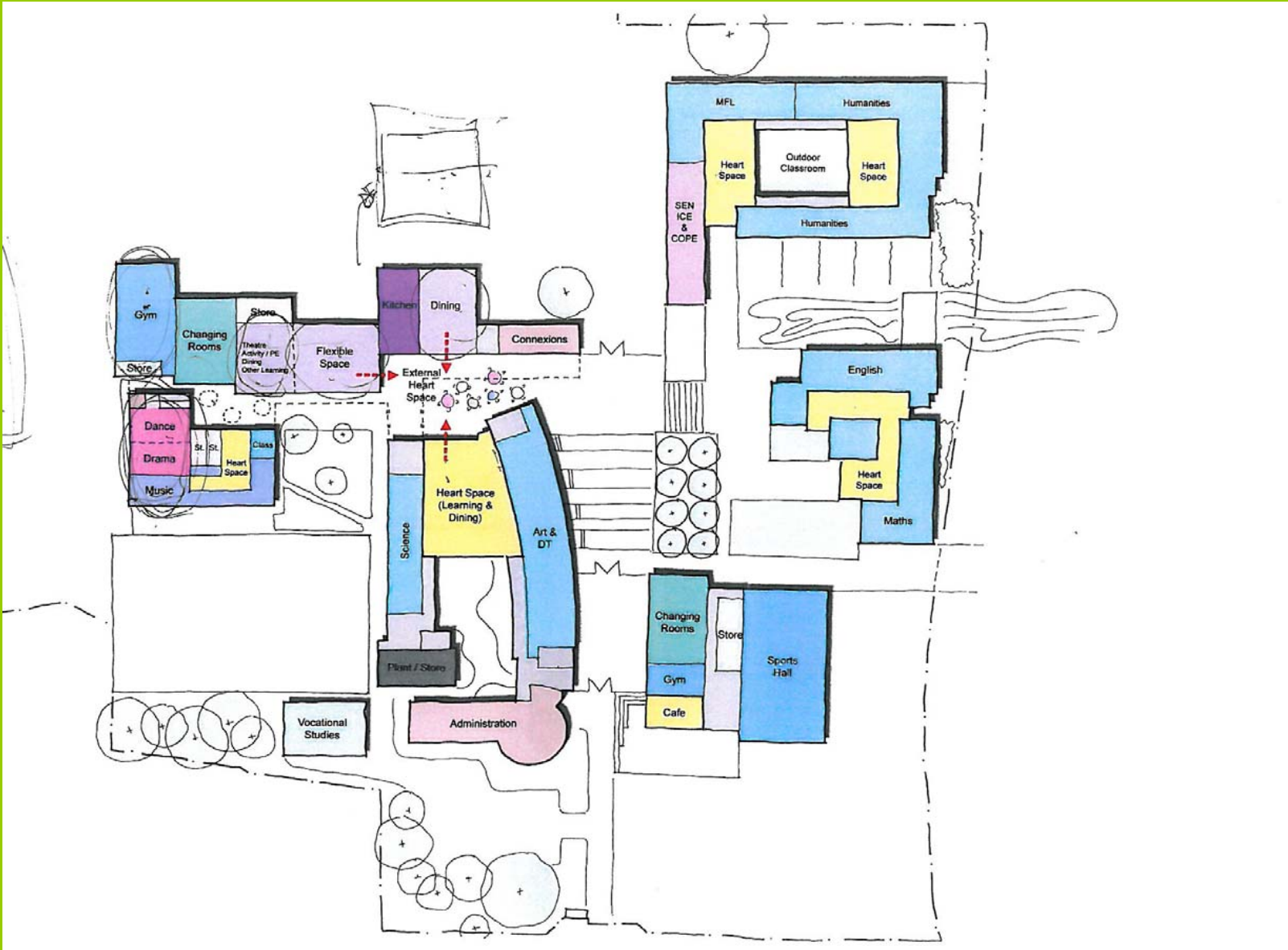
Masterplan option – ‘cloistered courtyard’



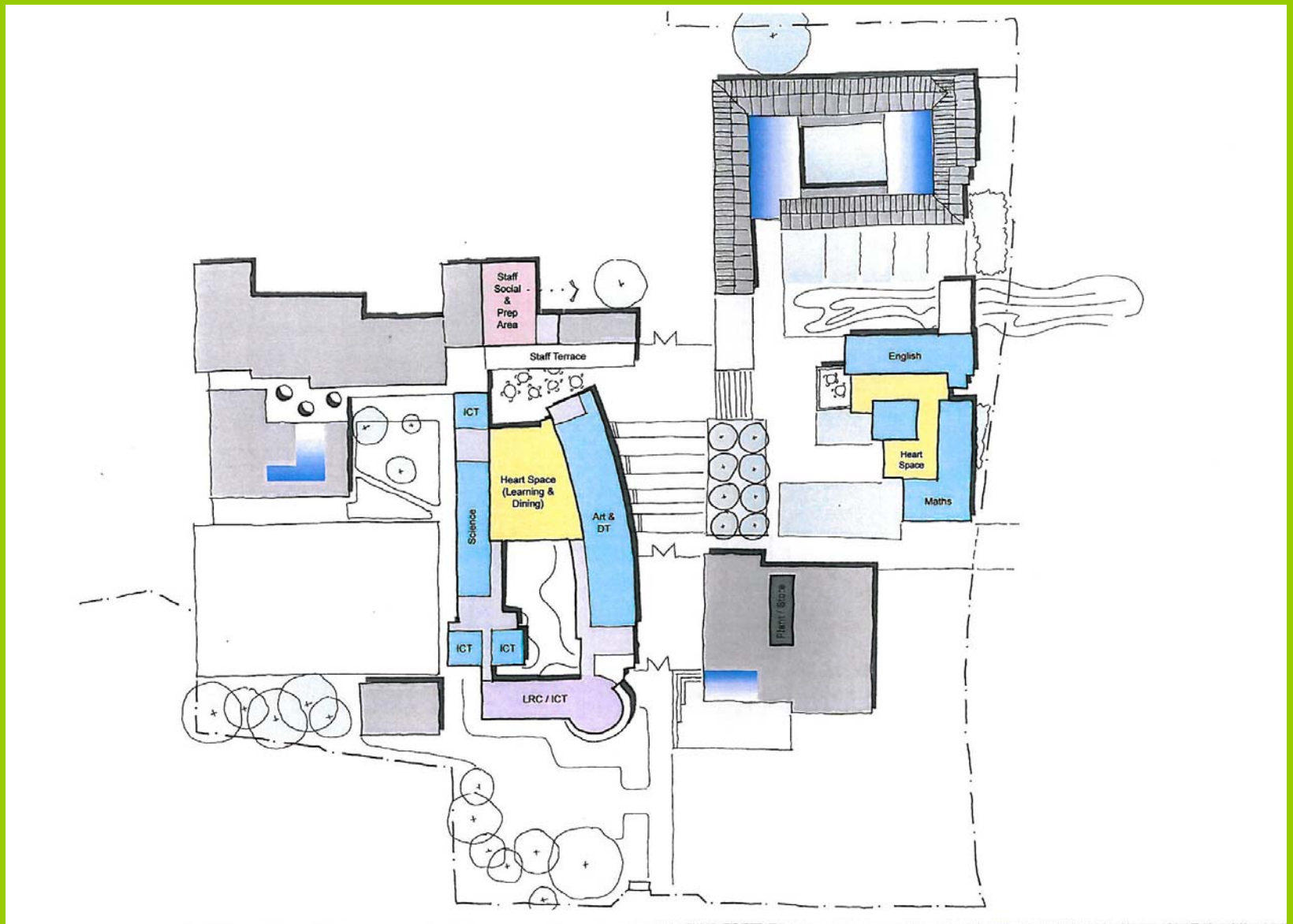
Proposed Masterplan with available funding



Proposed demolition plan



Proposed zoning ground floor plan



Proposed zoning first + second floor plan

Next Stages:

**Stage 1 design - starts: February 2010
complete May 2010**

- **consultation with wider community**
- **develop Stage 0 concept to sketch plan stage**
- **re-consult with community and Area Committee**
- **ensure design concept matches BSF budget**

Next Stages:

**Stage 2 design - starts: June 2010
complete August 2010**

- **develop Stage 1 concept to detail plan stage**
- **consultation with wider community and Area Committee**
- **ensure design concept matches BSF budget**
- **submission of planning application**
- **prepare for next stages to enable start on site for April 2011 start**